

PRODUCT DATA SHEET

A) SPECIFICATIONS

- 1 Stainless steel VEI 8x35 screw
- 2 Stainless steel bow MCI M8 Aisi 304
- 3 Stainless steel pressure plate PPV3-8

B) RESISTANCE TESTS

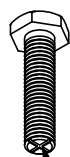
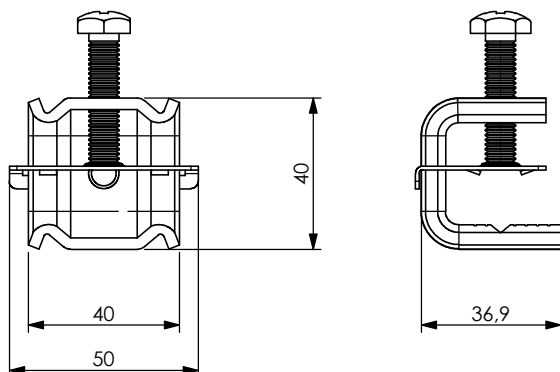
UV Test BS-ISO 105-B06
Vibration test conforming to UNI 60068-2-6

C) PACKAGING INFORMATION

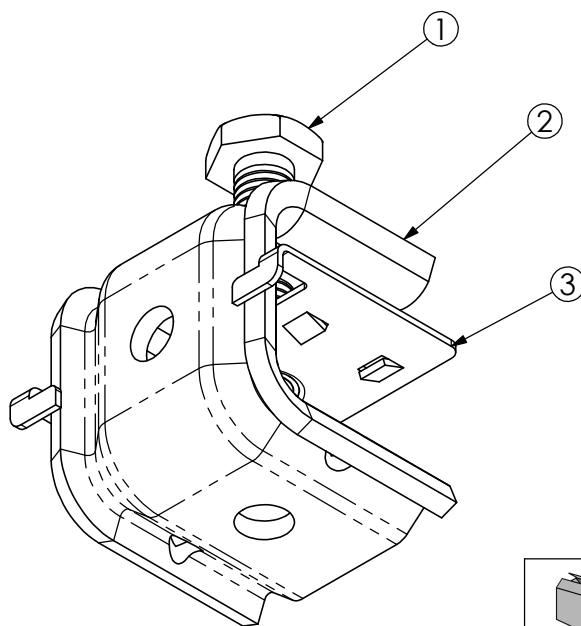
Packing in boxes.
Label indicating:
product code, article, quantity,
production batch,
FIMO logo and figure.
(Customer code on request).

D) MOUNTING INSTRUCTIONS

On request





detail of self-locking screw



code	6115231002
article	MCM/8

20	0.1332kg

RI	DATE	DR	DATE	AP	Description: MCM/8=compact clamp 8-25
02					
01					
00	17/06/2015	E.B.	17/06/2015	A.V.	
1 ST EMISSION					
					Use: Enbloc bidirectional mini clamp with a patented ribbed, self centring pressure plate and patented self-locking M8 screw