

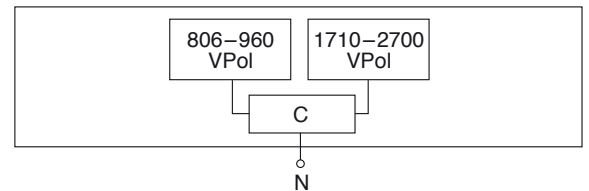
# Indoor Multi-band Direct. Antenna Vertical Polarization Half-power Beam Width Integrated Combiner

806–960	1710–2700
V	V
90°	90°
C	

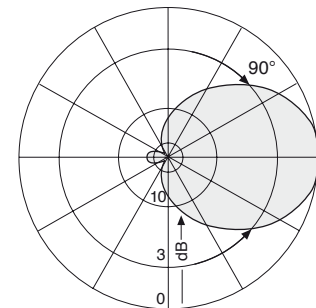
**KATHREIN**  
Antennen · Electronic

## VVPol Indoor 806–960/1710–2700 C 90° 7dBi

Type No.	<b>800 10465</b>
Frequency range	806 – 960 MHz / 1710 – 2700 MHz
Polarization	Vertical
Gain	Approx. 7 dBi
Half-power beam width	Horizontal: Approx. 90°
Impedance	50 Ω
VSWR	806 – 960 MHz: < 2.0 1710 – 2700 MHz: < 2.0
Max. power	50 W (at 50 °C ambient temperature)
Input	Cable RG 223/CU of 1m length, white, with N female connector
Protection class	IP 30
Weight	500 g
Packing size	363 x 152 x 62 mm
Height/width/depth	231 / 140 / 50 mm

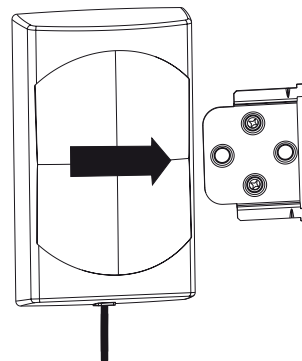
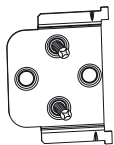


- Material:** Reflector: Aluminum.  
Radome: High impact polystyrol, colour: White.  
Additional painting is possible.  
Mounting plates: Stainless steel.
- Mounting:** Two holes of 6 mm diameter in the mounting plate.  
Screws are not supplied.  
Avoid to stress the cable.
- Grounding:** All metal parts inclusive the inner conductor are DC grounded.
- Available accessories:** Broadband power splitters and tappers (800 – 2700 MHz).

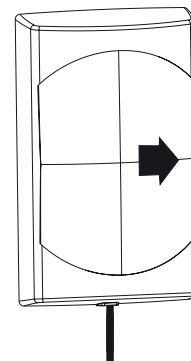


Horizontal Pattern

### Mounting:



Align the antenna over the attachment plate.



Pull the antenna to the stop.

Mount the attachment plate to the wall using two screws of 4 mm diameter in the position as indicated.

936.3036 Subject to alteration.