

Summary – Directional Antennas

Dual-band

800/900 – 1800/2000

Dual Polarization +45°/–45°

Type	Type No.	Height [mm]	Connector position	Page
XXPol Panel 806–960 C 65° 8.5dBi 0°T 1710–2180 60° 9.5dBi 0°T	800 10454	270	bottom or top	86
XXPol Panel 806–960 65° 12dBi 0°T 1710–2170 60° 14dBi 0°T	742 226	579	bottom or top	87
XXPol Panel 806–960 C 65° 12dBi 0°T 1710–2170 60° 14dBi 0°T	742 222	579	bottom or top	88
XXPol Panel 824–960 65° 14dBi 0°–14°T 1710–2180 65° 17dBi 0°–8°T	742 264	1316	bottom	89
XXPol Panel 824–960 C 65° 14dBi 0°–14°T 1710–2180 65° 17dBi 0°–8°T	742 223	1316	bottom	90
XXPol Panel 870–960 65° 17dBi 0°T 1710–1880 60° 18.5dBi 0°T	741 327	1936	bottom or top	91
XXPol Panel 870–960 C 65° 17dBi 0°T 1710–1880 60° 18dBi 0°T	741 322	1936	bottom or top	91
XXPol Panel 824–960 65° 16dBi 0°–10°T 1710–2180 65° 18.5dBi 0°–6°T	742 265	1916	bottom	92
XXPol Panel 790–960 65° 16.5dBi 2°–14°T 1710–2180 65° 18.5dBi 4°–14°T	800 10485	1998	bottom	93
XXPol Panel 824–960 C 65° 16dBi 0°–10°T 1710–2180 65° 18.5dBi 0°–6°T	742 224	1916	bottom	94
XXPol Panel 870–960 C 65° 17.5dBi 6°T 1710–1880 60° 17.5dBi 6°T	741 336	2580	bottom	95
XXPol Panel 870–960 C 65° 17dBi 2°–8°T 1710–1880 60° 18dBi 2°T	742 047	2580	bottom	95
XXPol Panel 790–960 65° 17dBi 0°–7°T 1710–2180 65° 18.5dBi 0°–6°T	742 266	2516	bottom	96
XXPol Panel 790–960 65° 17.5dBi 4°–12°T 1710–2180 65° 18.5dBi 4°–14°T	800 10486	2516	bottom	97
XXPol Panel 824–960 C 65° 17dBi 0°–7°T 1710–2180 65° 18.5dBi 0°–6°T	742 225	2516	bottom	98
XXPol Panel 806–960 88° 13.5dBi 0°–12°T 1710–2180 88° 16.5dBi 0°–10°T	800 10121	1384	bottom	99
XXPol Panel 806–960 88° 15.2dBi 0°–10°T 1710–2180 88° 18dBi 0°–6°T	800 10122	1917	bottom	100
XXPol Panel 806–960 88° 16.5dBi 0°–7°T 1710–2180 88° 18dBi 0°–6°T	800 10123	2635	bottom	101

C = integrated Combiner

New or changed product

*When deploying
Dual-band Antennas,
please also consider using
special Dual-band Combiners
(see pages 228 and 229)*

800/900 –
1800/2000
XXPol

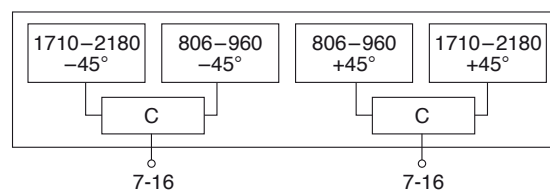
Dual-band Panel Dual Polarization Half-power Beam Width

806–960	1710–2180
X	X
65°	65°

KATHREIN
Antennen · Electronic

XXPol Panel 806–960/1710–2180 C 65°/65° 8.5/9.5dBi

Type No.	800 10454					
Frequency range	806–960		1710–2180			
	806 – 866 MHz	824 – 894 MHz	880 – 960 MHz	1710 – 1880 MHz	1850 – 1990 MHz	1920 – 2180 MHz
Polarization	+45°, –45°	+45°, –45°	+45°, –45°	+45°, –45°	+45°, –45°	+45°, –45°
Average gain	2 x 8.5 dBi	2 x 8.5 dBi	2 x 8.5 dBi	2 x 9.5 dBi	2 x 9.5 dBi	2 x 9.2 dBi
Horizontal Pattern:						
Half-power beam width	67°	67°	65°	60°	63°	68°
Front-to-back ratio [dB]	Copolar: > 25	Copolar: > 25	Copolar: > 25	Copolar: > 25	Copolar: > 25	Copolar: > 25
[dB]	Total power: > 20	Total power: > 20	Total power: > 22	Total power: > 22	Total power: > 22	Total power: > 22
Cross polar ratio	Typically: 25 dB	Typically: 25 dB	Typically: 20 dB	Typically: 20 dB	Typically: 19 dB	Typically: 20 dB
Maindirection	0°	0°	0°	0°	0°	0°
Sector	±60°	±60°	±60°	±60°	±60°	±60°
Vertical Pattern:						
Half-power beam width	68°	68°	69°	64°	62°	60°
VSWR	< 1.5					
Isolation: Intrasystem	> 30 dB					
Intermodulation IM3	< –150 dBc (2 x 43 dBm carrier)					
Max. power	250 W (at 50 °C ambient temperature)			100 W (at 50 °C ambient temperature)		
Max. power per combined input	350 W (at 50 °C ambient temperature)					
Input	2 x 7-16 female					
Connector position	Bottom or top					
Weight	4.3 kg					
Wind load (at 150 km/h)	Frontal / lateral / rearside: 45 / 25 / 95 N					
Height/width/depth	270 / 262 / 116 mm					
Integrated combiner	The insertion loss is included in the given antenna gain values.					



800/900 - 1800/2000 XXPol

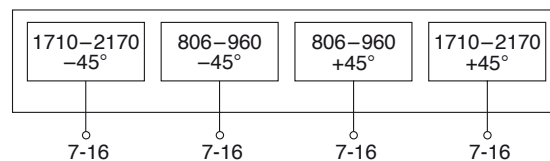
Dual-band Panel Dual Polarization Half-power Beam Width

806–960	1710–2170
X	X
65°	60°

KATHREIN
Antennen · Electronic

XXPol Panel 806–960/1710–2170 65°/60° 12/14dBi 0°/0°T

Type No.	742 226					
Frequency range	806–960		1710–2170			
	806 – 866 MHz	824 – 894 MHz	880 – 960 MHz	1710 – 1880 MHz	1850 – 1990 MHz	1920 – 2170 MHz
Polarization	+45°, –45°	+45°, –45°	+45°, –45°	+45°, –45°	+45°, –45°	+45°, –45°
Gain	2 x 11.1 dBi	2 x 11.4 dBi	2 x 11.8 dBi	2 x 12.8 dBi	2 x 13.3 dBi	2 x 13.6 dBi
Half-power beam width Copolar +45°/–45°	Horizontal: 67° Vertical: 34°	Horizontal: 66° Vertical: 33°	Horizontal: 64° Vertical: 30°	Horizontal: 66° Vertical: 20°	Horizontal: 60° Vertical: 18°	Horizontal: 60° Vertical: 17.5°
Front-to-back ratio (180° ±30°)	[dB] [dB]	Copolar: > 23 Total power: > 20	Copolar: > 23 Total power: > 20	Copolar: > 25 Total power: > 22	Copolar: > 25 Total power: > 22	Copolar: > 25 Total power: > 22
Cross polar ratio Maindirection Sector	0° ±60°	Typically: 25 dB > 10 dB	Typically: 25 dB > 10 dB	Typically: 25 dB > 10 dB	Typically: 16 dB > 10 dB	Typically: 18 dB > 10 dB
Isolation: Intrasystem		> 30 dB	> 30 dB	> 30 dB	> 30 dB	> 30 dB
Isolation: Intersystem	> 45 dB (806–960 // 1710–2170 MHz)					
VSWR	< 1.5	< 1.5	< 1.5	< 1.5	< 1.5	< 1.5
Intermodulation IM3 (2 x 43 dBm carrier)	< –150 dBc			< –150 dBc		
Max. power per input	250 W (at 50 °C ambient temperature)			200 W (at 50 °C ambient temperature)		
Input	4 x 7-16 female					
Connector position	Bottom or top					
Weight	7.5 kg					
Wind load (at 150 km/h)	Frontal / lateral / rearside: 100 / 80 / 180 N					
Height/width/depth	579 / 262 / 139 mm					



800/900 –
1800/2000
XXPol

Dual-band Panel Dual Polarization Half-power Beam Width

806–960

1710–2170

X

X

65°

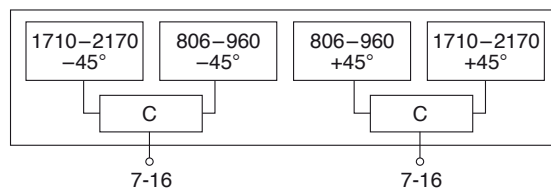
60°

KATHREIN

Antennen · Electronic

XXPol Panel 806–960/1710–2170 C 65°/60° 12/14dBi 0°/0°T

Type No.	742 222					
Frequency range	806–960		1710–2170			
	806 – 866 MHz	824 – 894 MHz	880 – 960 MHz	1710 – 1880 MHz	1850 – 1990 MHz	1920 – 2170 MHz
Polarization	+45°, –45°	+45°, –45°	+45°, –45°	+45°, –45°	+45°, –45°	+45°, –45°
Gain	2 x 11.1 dBi	2 x 11.4 dBi	2 x 11.8 dBi	2 x 12.5 dBi	2 x 13.3 dBi	2 x 13.6 dBi
Half-power beam width Copolar +45°/–45°	Horizontal: 67° Vertical: 34°	Horizontal: 66° Vertical: 33°	Horizontal: 64° Vertical: 30°	Horizontal: 66° Vertical: 20°	Horizontal: 60° Vertical: 18°	Horizontal: 60° Vertical: 17.5°
Front-to-back ratio (180° ± 30°)	[dB] [dB]	Copolar: > 23 Total power: > 20	Copolar: > 23 Total power: > 20	Copolar: > 25 Total power: > 22	Copolar: > 25 Total power: > 22	Copolar: > 25 Total power: > 22
Cross polar ratio Mairdirection Sector	0° ±60°	Typically: 25 dB > 10 dB	Typically: 25 dB > 10 dB	Typically: 25 dB > 10 dB	Typically: 18 dB > 10 dB	Typically: 18 dB > 10 dB
Isolation: Intrasystem		> 30 dB	> 30 dB	> 30 dB	> 30 dB	> 30 dB
VSWR		< 1.5	< 1.5	< 1.5	< 1.5	< 1.5
Intermodulation IM3 (2 x 43 dBm carrier)		< –150 dBc			< –150 dBc	
Max. power	250 W (at 50 °C ambient temperature)			200 W (at 50 °C ambient temperature)		
Max. power per combined input	450 W (at 50 °C ambient temperature)					
Input	2 x 7-16 female					
Connector position	Bottom or top					
Weight	7.2 kg					
Wind load (at 150 km/h)	Frontal / lateral / rearside: 100 / 80 / 180 N					
Height/width/depth	579 / 262 / 139 mm					
Integrated combiner	The insertion loss is included in the given antenna gain values.					



Dual-band Panel Dual Polarization Half-power Beam Width

824–960	1710–2180
X	X
65°	65°

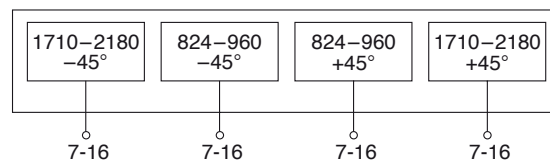
KATHREIN
Antennen · Electronic

XXPol Panel 824–960/1710–2180 65°/65° 14/17dBi 0°–14°/0°–8°T

Type No.	742 264				
Frequency range	824–960 824–894 MHz 870–960 MHz		1710–2180 1710–1880 MHz 1850–1990 MHz 1920–2180 MHz		
Polarization	+45°, –45°	+45°, –45°	+45°, –45°	+45°, –45°	+45°, –45°
Gain	2 x 14 dBi	2 x 14 dBi	2 x 16.5 dBi	2 x 16.8 dBi	2 x 17 dBi
Horizontal Pattern:					
Half-power beam width	68°	65°	65°	65°	63°
Front-to-back ratio, copolar	> 26 dB	> 26 dB	> 25 dB	> 25 dB	> 25 dB
Cross polar ratio Maindirection 0° Sector ±60°	Typically: 20 dB > 10 dB	Typically: 20 dB > 10 dB	Typically: 16 dB > 10 dB	Typically: 18 dB > 10 dB	Typically: 20 dB > 10 dB
Vertical Pattern:					
Half-power beam width	16°	14.5°	7.8°	7.5°	7.2°
Electrical tilt continuously adjustable	0°–14°	0°–14°	0°–8°	0°–8°	0°–8°
Sidelobe suppression for first sidelobe above main beam	0° ... 7° ... 14° T 14 ... 14 ... 13 dB	0° ... 7° ... 14° T 14 ... 14 ... 13 dB	0° ... 4° ... 8° T 14 ... 14 ... 14 dB	0° ... 4° ... 8° T 16 ... 16 ... 15 dB	0° ... 4° ... 8° T 15 ... 16 ... 15 dB
VSWR	< 1.5	< 1.5	< 1.5	< 1.5	< 1.5
Isolation: Intrasystem	> 30 dB	> 30 dB	> 30 dB	> 30 dB	> 30 dB
Isolation: Intersystem	Typically: > 50 dB (824–960 // 1710–2180 MHz)				
Intermodulation IM3	< –150 dBc (2 x 43 dBm carrier)		< –150 dBc (2 x 43 dBm carrier)		
Max. power per input Total power	500 W 1000 W		250 W 500 W		
(at 50 °C ambient temperature)					
Input	4 x 7-16 female (long neck)				
Connector position	Bottom				
Adjustment mechanism	2x, Position bottom, continuously adjustable				
Weight	16.5 kg				
Wind load (at 150 km/h)	Frontal / lateral / rearside: 230 / 180 / 430 N				
Height/width/depth	1316 / 262 / 139 mm				



800/900 –
1800/2000
XXPol



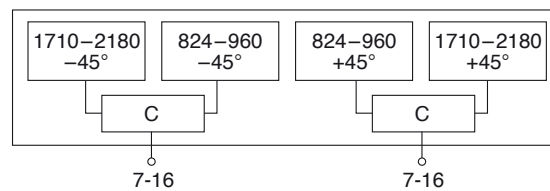
Dual-band Panel Dual Polarization Half-power Beam Width

824–960	1710–2180
X	X
65°	65°

KATHREIN
Antennen · Electronic

XXPol Panel 824–960/1710–2180 C 65°/65° 14/17dBi 0°–14°/0°–8°T

Type No.	742 223				
Frequency range	824–960		1710–2180		
	824–894 MHz	880–960 MHz	1710–1880 MHz	1850–1990 MHz	1900–2180 MHz
Polarization	+45°, –45°	+45°, –45°	+45°, –45°	+45°, –45°	+45°, –45°
Gain	2 x 14 dBi	2 x 14 dBi	2 x 16.5 dBi	2 x 16.8 dBi	2 x 17 dBi
Horizontal Pattern:					
Half-power beam width	68°	65°	66°	63°	62°
Front-to-back ratio, copolar	> 26 dB	> 26 dB	> 25 dB	> 25 dB	> 25 dB
Cross polar ratio	Typically: 20 dB	Typically: 20 dB	Typically: 18 dB	Typically: 19 dB	Typically: 20 dB
Main direction	0°				
Sector	±60°				
Vertical Pattern:					
Half-power beam width	15.5°	14.3°	7.8°	7.7°	7.4°
Electrical tilt	0°–14°, continuously adjustable		0°–8°, continuously adjustable		
Sidelobe suppression for first sidelobe above main beam	0° ... 7° ... 14° T 14 ... 13 ... 12 dB	0° ... 7° ... 14° T 16 ... 14 ... 13 dB	0° ... 4° ... 8° T 18 ... 18 ... 15 dB	0° ... 4° ... 8° T 18 ... 18 ... 16 dB	0° ... 4° ... 8° T 15 ... 17 ... 17 dB
VSWR	< 1.5				
Isolation: Intrasystem	> 30 dB				
Intermodulation IM3	< –150 dBc (2 x 43 dBm carrier)				
Max. power	250 W		200 W		
	(at 50 °C ambient temperature)				
Max. power per combined input	450 W (at 50 °C ambient temperature)				
Input	2 x 7-16 female (long neck)				
Connector position	Bottom				
Adjustment mechanism	2x, Position bottom continuously adjustable				
Weight	16.5 kg				
Wind load (at 150 km/h)	Frontal / lateral / rearside: 230 / 180 / 430 N				
Height/width/depth	1316 / 262 / 139 mm				
Integrated combiner	The insertion loss is included in the given antenna gain values.				



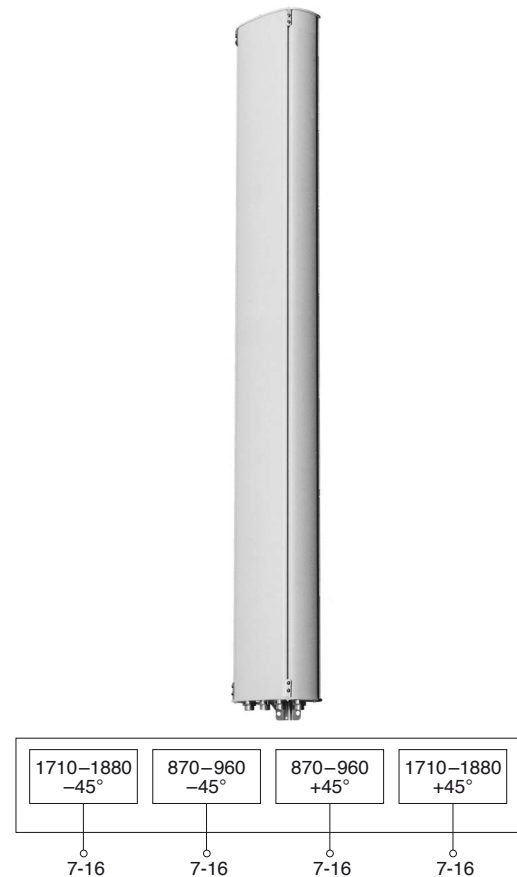
Dual-band Panel Dual Polarization Half-power Beam Width

870–960	1710–1880
X	X
65°	60°

KATHREIN
Antennen · Electronic

XXPol Panel 870–960/1710–1880 65°/60° 17/18.5dBi

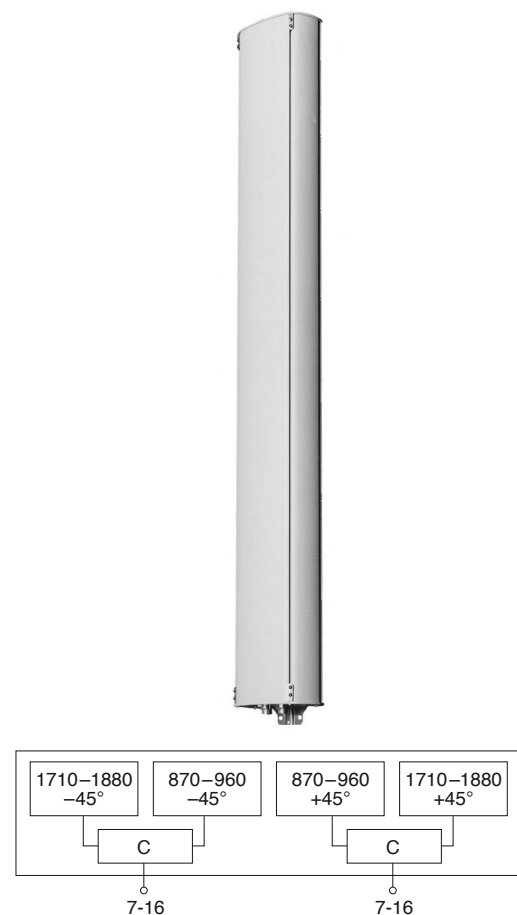
Type No.	741 327	
Frequency range	870–960 870 – 960 MHz	1710–1880 1710 – 1880 MHz
Polarization	+45°, –45°	+45°, –45°
Gain	2 x 17 dBi	2 x 18.5 dBi
Half-power beam width Copolar +45°/–45°	Horizontal: 65° Vertical: 9.5°	Horizontal: 60° Vertical: 5.5°
Sidelobe suppression for first sidelobe above horizon	> 15 dB	
Front-to-back ratio, copolar	> 30 dB	> 30 dB
Isolation, between ports	> 30 dB (GSM 900 – GSM 900) > 30 dB (GSM 1800 – GSM 1800) > 30 dB (GSM 900 – GSM 1800)	
VSWR	< 1.5	< 1.5
Intermodulation IM3 (2 x 43 dBm carrier)	< –150 dBc	< –150 dBc
Max. power per input	400 W	200 W (at 50 °C ambient temperature)
Input	4 x 7-16 female	
Connector position	Bottom or top	
Weight	19 kg	
Wind load (at 150 km/h)	Frontal / lateral / rearside: 330 / 200 / 770 N	
Height/width/depth	1936 / 262 / 116 mm	



800/900 –
1800/2000
XXPol

XXPol Panel 870–960/1710–1880 C 65°/60° 17/18dBi

Type No.	741 322	
Frequency range	870–960 870 – 960 MHz	1710–1880 1710 – 1880 MHz
Polarization	+45°, –45°	+45°, –45°
Gain	2 x 17 dBi	2 x 18 dBi
Half-power beam width Copolar +45°/–45°	Horizontal: 65° Vertical: 9.5°	Horizontal: 60° Vertical: 5.5°
Sidelobe suppression for first sidelobe above horizon	> 15 dB	> 15 dB
Front-to-back ratio, copolar	> 30 dB	> 30 dB
Isolation, between ports	> 30 dB	> 30 dB
VSWR	< 1.5	< 1.5
Intermodulation IM3 (2 x 43 dBm carrier)	< –150 dBc	< –150 dBc
Max. power per input	250 W	150 W (at 50 °C ambient temperature)
Input	2 x 7-16 female	
Connector position	Bottom or top	
Weight	19 kg	
Wind load (at 150 km/h)	Frontal / lateral / rearside: 330 / 200 / 770 N	
Height/width/depth	1936 / 262 / 116 mm	
Integrated combiner	The insertion loss is included in the given antenna gain values.	



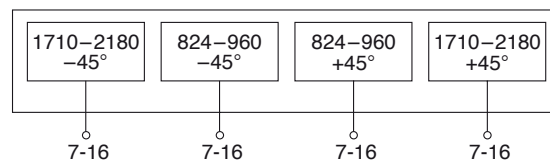
Dual-band Panel Dual Polarization Half-power Beam Width

824–960	1710–2180
X	X
65°	65°

KATHREIN
Antennen · Electronic

XXPol Panel 824–960/1710–2180 65°/65° 16/18.5dBi 0°–10°/0°–6°T

Type No.	742 265				
Frequency range	824–960 824–894 MHz 880–960 MHz		1710–2180 1710–1880 MHz 1850–1990 MHz 1920–2180 MHz		
Polarization	+45°, –45°	+45°, –45°	+45°, –45°	+45°, –45°	+45°, –45°
Gain	2 x 15.5 dBi	2 x 16 dBi	2 x 17.8 dBi	2 x 18.2 dBi	2 x 18.3 dBi
Horizontal Pattern:					
Half-power beam width	68°	65°	67°	65°	63°
Front-to-back ratio (180°±30°)	> 27 dB	> 25 dB	> 25 dB	> 25 dB	> 25 dB
Cross polar ratio Maindirection 0° Sector ±60°	Typically: 20 dB > 10 dB	Typically: 20 dB > 10 dB	Typically: 16 dB > 10 dB	Typically: 18 dB > 10 dB	Typically: 18 dB > 10 dB
Vertical Pattern:					
Half-power beam width	10.5°	10°	5.2°	5.0°	4.9°
Electrical tilt continuously adjustable	0.5°–9.5°	0.5°–9.5°	0°–6°	0°–6°	0°–6°
Sidelobe suppression for first sidelobe above main beam	0.5°... 5°... 9.5°T 15 ... 15 ... 15 dB	0.5°... 5°... 9.5°T 15 ... 17 ... 19 dB	0° ... 3° ... 6° T 14 ... 15 ... 15 dB	0° ... 3° ... 6° T 18 ... 17 ... 17 dB	0° ... 3° ... 6° T 17 ... 17 ... 16 dB
VSWR	< 1.5	< 1.5	< 1.5	< 1.5	< 1.5
Isolation: Intrasystem	> 30 dB	> 30 dB	> 30 dB	> 30 dB	> 30 dB
Isolation: Intersystem	Typically: > 50 dB (824–960 // 1710–2180 MHz)				
Intermodulation IM3	< –150 dBc (2 x 43 dBm carrier)		< –150 dBc (2 x 43 dBm carrier)		
Max. power per input Total power	500 W 1000 W (at 50 °C ambient temperature)		250 W 500 W		
Input	4 x 7-16 female (long neck)				
Connector position	Bottom				
Adjustment mechanism	2x, Position bottom, continuously adjustable				
Weight	22 kg				
Wind load (at 150 km/h)	Frontal / lateral / rearside: 340 / 280 / 640 N				
Height/width/depth	1916 / 262 / 139 mm				



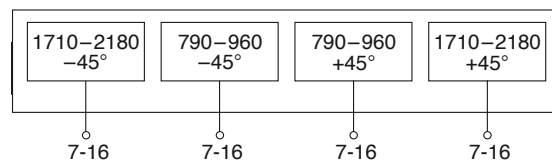
800/900 - 1800/2000 XXPol

Dual-band Panel**790 – 960****1710–2180****Dual Polarization****X****X****Half-power Beam Width****65°****65°****KATHREIN**

Antennen · Electronic

XXPol Panel 790–960/1710–2180 65°/65° 16.5/18.5dBi 2°–14°/4°–14°T

Type No.	800 10485					
Frequency range	790–960 790 – 862 MHz 824 – 896 MHz 880 – 960 MHz		1710–2180 1710 – 1880 MHz 1850 – 1990 MHz 1920 – 2180 MHz			
Polarization	+45°, –45°		+45°, –45°		+45°, –45°	
Average gain (dBi)	16.2 ... 16 ... 15.7		16.3 ... 16.1 ... 15.8		16.4 ... 16.2 ... 15.8	
Tilt	2° ... 8° ... 14°		2° ... 8° ... 14°		2° ... 8° ... 14°	
Horizontal Pattern:						
Half-power beam width	68°		67°		65°	
Front-to-back ratio (180°±30°)	> 25 dB		> 25 dB		> 25 dB	
Cross polar ratio Maindirection Sector	Typically: 0° 25 dB		Typically: 25 dB		Typically: 20 dB	
	> 10 dB		> 10 dB		> 10 dB	
Vertical Pattern:						
Half-power beam width	10°		9.7°		9.3°	
Electrical tilt	2°–14°, continuously adjustable			4°–14°, continuously adjustable		
Sidelobe suppression for first sidelobe above main beam	2° ... 8° ... 14° T 17 ... 17 ... 15 dB		2° ... 8° ... 14° T 17 ... 17 ... 16 dB		2° ... 8° ... 14° T 17 ... 17 ... 16 dB	
	4° ... 9° ... 14° T 20 ... 18 ... 15 dB		4° ... 9° ... 14° T 19 ... 18 ... 15 dB		4° ... 9° ... 14° T 18 ... 17 ... 15 dB	
VSWR	< 1.5					
Isolation: Intrasystem	> 30 dB					
Isolation: Intersystem	> 35 dB (790–960 // 1710–2180 MHz)					
Intermodulation IM3	< –153 dBc (2 x 43 dBm carrier)					
Max. power per input Total power	400 W (at 50 °C ambient temperature) 800 W (at 50 °C ambient temperature)			250 W (at 50 °C ambient temperature) 500 W (at 50 °C ambient temperature)		
Input	4 x 7-16 female (long neck)					
Connector position	Bottom					
Adjustment mechanism	2x, Position bottom continuously adjustable					
Weight	24 kg					
Wind load (at 150 km/h)	Frontal / lateral / rearside: 750 / 380 / 900 N					
Height/width/depth	2038 / 262 / 139 mm					

800/900 –
1800/2000
XXPol

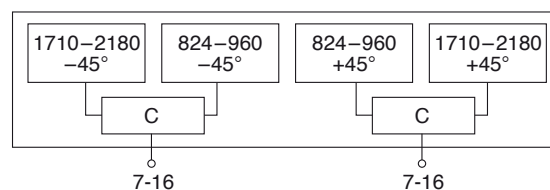
Dual-band Panel Dual Polarization Half-power Beam Width

824–960	1710–2180
X	X
65°	65°

KATHREIN
Antennen · Electronic

XXPol Panel 824–960/1710–2180 C 65°/65° 16/18.5dBi 0°–10°/0°–6°T

Type No.	742 224				
Frequency range	824–960		1710–2180		
	824–894 MHz	880–960 MHz	1710–1880 MHz	1850–1990 MHz	1900–2180 MHz
Polarization	+45°, –45°	+45°, –45°	+45°, –45°	+45°, –45°	+45°, –45°
Gain	2 x 15.5 dBi	2 x 16 dBi	2 x 17.8 dBi	2 x 18.2 dBi	2 x 18.3 dBi
Horizontal Pattern:					
Half-power beam width	68°	65°	67°	65°	63°
Front-to-back ratio, copolar	> 27 dB	> 25 dB	> 25 dB	> 25 dB	> 25 dB
Cross polar ratio	Typically:	Typically:	Typically:	Typically:	Typically:
Maindirection 0°	20 dB	20 dB	17 dB	18 dB	19 dB
Sector ±60°	> 10 dB	> 10 dB	> 10 dB	> 10 dB	> 10 dB
Vertical Pattern:					
Half-power beam width	10.7°	10.2°	5.0°	4.7°	4.5°
Electrical tilt	0.5°–9.5°, continuously adjustable		0°–6°, continuously adjustable		
Sidelobe suppression for first sidelobe above main beam	0° ... 5° ... 10° T 15 ... 15 ... 17 dB	0° ... 5° ... 10° T 16 ... 17 ... 18 dB	0° ... 3° ... 6° T 19 ... 17 ... 13 dB	0° ... 3° ... 6° T 19 ... 18 ... 14 dB	0° ... 3° ... 6° T 19 ... 18 ... 15 dB
VSWR	< 1.5				
Isolation: Intrasystem	> 30 dB				
Intermodulation IM3	< –150 dBc (2 x 43 dBm carrier)				
Max. power	250 W		200 W		
	(at 50 °C ambient temperature)				
Max. power per combined input	450 W (at 50 °C ambient temperature)				
Input	2 x 7-16 female (long neck)				
Connector position	Bottom				
Adjustment mechanism	2x, Position bottom continuously adjustable				
Weight	23 kg				
Wind load (at 150 km/h)	Frontal / lateral / rearside: 340 / 280 / 640 N				
Height/width/depth	1916 / 262 / 139 mm				
Integrated combiner	The insertion loss is included in the given antenna gain values.				



800/900 – 1800/2000 XXPol

Dual-band Panel Dual Polarization Half-power Beam Width

870–960

1710–1880

X

X

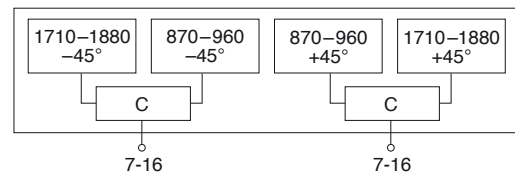
65°

60°

KATHREIN
Antennen · Electronic

XXPol Panel 870–960/1710–1880 C 65°/60° 17.5/17.5dBi 6°T

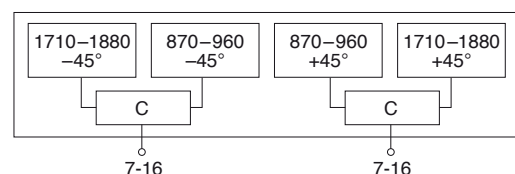
Type No.	741 336	
Frequency range	870–960 870 – 960 MHz	1710–1880 1710 – 1880 MHz
Polarization	+45°, –45°	+45°, –45°
Gain	2 x 17.5 dBi	2 x 17.5 dBi
Half-power beam width Copolar +45°/–45°	Horizontal: 65° Vertical: 7°	Horizontal: 60° Vertical: 6.5°
Electrical tilt	6°, fixed	6°, fixed
Front-to-back ratio, copolar	> 30 dB	> 30 dB
Isolation, between ports	> 30 dB	> 30 dB
VSWR	< 1.5	< 1.5
Intermodulation IM3 (2 x 43 dBm carrier)	< –150 dBc	< –150 dBc
Max. power per input	250 W	150 W (at 50 °C ambient temperature)
Input	2 x 7-16 female	
Connector position	Bottom	
Weight	25 kg	
Wind load (at 150 km/h)	Frontal / lateral / rearside: 470 / 280 / 1040 N	
Height/width/depth	2580 / 262 / 116 mm	
Integrated combiner	The insertion loss is included in the given antenna gain values.	



800/900 -
1800/2000
XXPol

XXPol Panel 870–960/1710–1880 C 65°/60° 17/18dBi 2°–8°T/2°T

Type No.	742 047	
Frequency range	870–960 870 – 960 MHz	1710–1880 1710 – 1880 MHz
Polarization	+45°, –45°	+45°, –45°
Gain	2 x 17 dBi (–0.5 dB)	2 x 18 dBi (–0.5 dB)
Half-power beam width Copolar +45°/–45°	Horizontal: 65° Vertical: 7°	Horizontal: 60° Vertical: 6°
Electrical tilt	2°–8°, adjustable	2°, fixed
Sidelobe suppression for first sidelobe above horizon	2° ... 4° ... 6° ... 8° T 20 ... 18 ... 17 ... 15 dB	2° T 17 dB
Front-to-back ratio, copolar	> 30 dB	> 30 dB
Isolation, between ports	> 30 dB	> 30 dB
VSWR	< 1.5	< 1.5
Intermodulation IM3 (2 x 43 dBm carrier)	< –150 dBc	< –150 dBc
Max. power per input	250 W	150 W (at 50 °C ambient temperature)
Input	2 x 7-16 female	
Connector position	Bottom	
Adjustment mechanism	1x, Position bottom, continuously adjustable	
Weight	25 kg	
Wind load (at 150 km/h)	Frontal / lateral / rearside: 470 / 280 / 1040 N	
Height/width/depth	2580 / 262 / 116 mm	
Integrated combiner	The insertion loss is included in the given antenna gain values.	



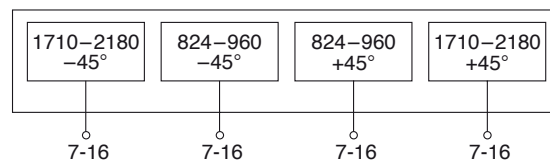
Dual-band Panel Dual Polarization Half-power Beam Width

790–960	1710–2180
X	X
65°	65°

KATHREIN
Antennen · Electronic

XXPol Panel 790–960/1710–2180 65°/65° 17/18.5dBi 0°–7°/0°–6°T

Type No.	742 266				
Frequency range	790–960 790–862 MHz 880–960 MHz		1710–2180 1710–1880 MHz 1850–1990 MHz 1920–2180 MHz		
Polarization	+45°, –45°	+45°, –45°	+45°, –45°	+45°, –45°	+45°, –45°
Gain (dBi)	16.6 ... 16.6 ... 16.5	17.0 ... 17.1 ... 16.9	18.2 ... 18.5 ... 18.3	18.5 ... 18.7 ... 18.3	18.5 ... 18.7 ... 18.3
Tilt	0° ... 3° ... 7°	0° ... 3° ... 7°	0° ... 3° ... 6°	0° ... 3° ... 6°	0° ... 3° ... 6°
Horizontal Pattern:					
Half-power beam width	68°	65°	65°	65°	61°
Front-to-back ratio, copolar	> 30 dB	> 30 dB	> 30 dB	> 30 dB	> 30 dB
Cross polar ratio	Typically:	Typically:	Typically:	Typically:	Typically:
Maindirection	0°	0°	0°	0°	0°
Sector	±60°	±60°	±60°	±60°	±60°
Vertical Pattern:					
Half-power beam width	7.7°	7.2°	5.0°	4.8°	4.6°
Electrical tilt continuously adjustable	0°–7°	0°–7°	0°–6°	0°–6°	0°–6°
Sidelobe suppression for first sidelobe above main beam: average:	0° ... 4° ... 7° T ≥ 15 ... 16 ... 14 dB ≥ 17 ... 17 ... 15 dB	0° ... 4° ... 7° T ≥ 17 ... 16 ... 15 dB ≥ 18 ... 17 ... 15 dB	0° ... 3° ... 6° T ≥ 16 ... 15 ... 13 dB ≥ 18 ... 17 ... 15 dB	0° ... 3° ... 6° T ≥ 17 ... 16 ... 14 dB ≥ 18 ... 18 ... 16 dB	0° ... 3° ... 6° T ≥ 16 ... 15 ... 15 dB ≥ 18 ... 18 ... 16 dB
VSWR	< 1.5	< 1.5	< 1.5	< 1.5	< 1.5
Isolation: Intrasystem	> 30 dB	> 30 dB	> 30 dB	> 30 dB	> 30 dB
Isolation: Intersystem	> 45 dB, Typ. > 50 dB (790–960 // 1710–2180 MHz)				
Intermodulation IM3	< –150 dBc (2 x 43 dBm carrier)		< –150 dBc (2 x 43 dBm carrier)		
Max. power per input	500 W		250 W		
Total power	1000 W		500 W		
(at 50 °C ambient temperature)					
Input	4 x 7-16 female (long neck)				
Connector position	Bottom				
Adjustment mechanism	2x, Position bottom, continuously adjustable				
Weight	23 kg				
Wind load (at 150 km/h)	Frontal / lateral / rearside: 1160 / 500 / 1210 N (at 150 km/h)				
Height/width/depth	2533 / 269 / 154 mm				



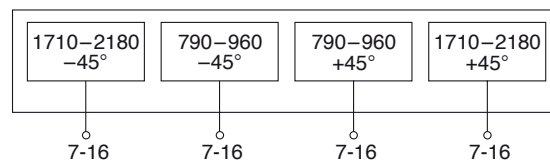
Dual-band Panel Dual Polarization Half-power Beam Width

790–960	1710–2180
X	X
65°	65°

KATHREIN
Antennen · Electronic

XXPol Panel 790–960/1710–2180 65°/65° 17.5/18.5dBi 4°–12°/4°–14°T

Type No.	800 10486					
Frequency range	790–960		1710–2180			
	790 – 862 MHz	824 – 896 MHz	880 – 960 MHz	1710 – 1880 MHz	1850 – 1990 MHz	1920 – 2180 MHz
Polarization	+45°, –45°	+45°, –45°	+45°, –45°	+45°, –45°	+45°, –45°	+45°, –45°
Average gain (dBi)	16.8 ... 16.7 ... 16.6	17 ... 16.8 ... 16.8	17.2 ... 17.0 ... 16.8	17.8 ... 18.1 ... 17.5	18.3 ... 18.3 ... 17.8	18.7 ... 18.7 ... 18.0
Tilt	4° ... 8° ... 12°	4° ... 8° ... 12°	4° ... 8° ... 12°	4° ... 9° ... 14°	4° ... 9° ... 14°	4° ... 9° ... 14°
Horizontal Pattern:						
Half-power beam width	68°	67°	66°	66°	64°	61°
Front-to-back ratio (180°±30°)	> 25 dB	> 25 dB	> 25 dB	> 25 dB	> 25 dB	> 25 dB
Cross polar ratio	Typically:	Typically:	Typically:	Typically:	Typically:	Typically:
Maindirection	0°	23 dB	24 dB	25 dB	18 dB	18 dB
Sector	±60°	> 10 dB	> 10 dB	> 10 dB	> 10 dB	> 10 dB
Vertical Pattern:						
Half-power beam width	7.5°	7.4°	7.2°	5°	4.8°	4.6°
Electrical tilt	4°–12°, continuously adjustable			4°–14°, continuously adjustable		
Sidelobe suppression	4° ... 8° ... 12° T	4° ... 8° ... 12° T	4° ... 8° ... 12° T	4° ... 9° ... 14° T	4° ... 9° ... 14° T	4° ... 9° ... 14° T
– for first sidelobe above main beam	18 ... 17 ... 16 dB	19 ... 18 ... 18 dB	19 ... 18 ... 18 dB	20 ... 18 ... 16 dB	19 ... 19 ... 16 dB	18 ... 18 ... 18 dB
– within 0°–20° sector above horizon	15 ... 15 ... 14 dB	16 ... 15 ... 14 dB	16 ... 15 ... 14 dB	17 ... 17 ... 15 dB	17 ... 17 ... 15 dB	17 ... 17 ... 15 dB
VSWR	< 1.5					
Isolation: Intrasystem	> 30 dB					
Isolation: Intersystem	> 45 dB (790–960 // 1710–2180 MHz)					
Intermodulation IM3	< –153 dBc (2 x 43 dBm carrier)					
Max. power per input	400 W (at 50 °C ambient temperature)			250 W (at 50 °C ambient temperature)		
Total power	800 W (at 50 °C ambient temperature)			500 W (at 50 °C ambient temperature)		
Input	4x 7-16 female (long neck)					
Connector position	Bottom					
Adjustment mechanism	2x, Position bottom continuously adjustable					
Weight	28 kg					
Wind load (at 150 km/h)	Frontal / lateral / rearside: 920 / 460 / 1150 N					
Height/width/depth	2516 / 262 / 139 mm					



800/900 –
1800/2000
XXPol

Dual-band Panel Dual Polarization Half-power Beam Width

824–960 1710–2180

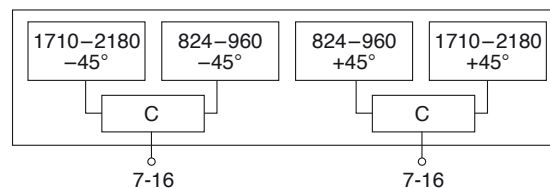
X X

65° 65°

KATHREIN
Antennen · Electronic

XXPol Panel 824–960/1710–2180 C 65°/65° 17/18.5dBi 0°–7°/0°–6°T

Type No.	742 225				
Frequency range	824–960		1710–2180		
	824–894 MHz	880–960 MHz	1710–1880 MHz	1850–1990 MHz	1900–2180 MHz
Polarization	+45°, –45°	+45°, –45°	+45°, –45°	+45°, –45°	+45°, –45°
Gain	2 x 16.5 dBi	2 x 16.8 dBi	2 x 17.8 dBi	2 x 18.1 dBi	2 x 18.3 dBi
Horizontal Pattern:					
Half-power beam width	68°	66°	66°	65°	61°
Front-to-back ratio, copolar	> 28 dB	> 28 dB	> 25 dB	> 25 dB	> 25 dB
Cross polar ratio Maindirection 0° Sector ±60°	Typically: 20 dB > 10 dB	Typically: 20 dB > 10 dB	Typically: 16 dB > 10 dB	Typically: 18 dB > 10 dB	Typically: 19 dB > 10 dB
Vertical Pattern:					
Half-power beam width	7.5°	7.2°	5.1°	4.9°	4.6°
Electrical tilt continuously adjust.	0.5°–7°		0°–6°		
Sidelobe suppression for first sidelobe above main beam	0° ... 4° ... 7° T 15 ... 15 ... 15 dB	0° ... 4° ... 7° T 17 ... 17 ... 16 dB	0° ... 3° ... 6° T 17 ... 16 ... 14 dB	0° ... 3° ... 6° T 17 ... 16 ... 15 dB	0° ... 3° ... 6° T 16 ... 17 ... 15 dB
VSWR	< 1.5				
Isolation: Intrasystem	> 30 dB				
Intermodulation IM3	< –150 dBc (2 x 43 dBm carrier)				
Max. power	250 W		200 W		
	(at 50 °C ambient temperature)				
Max. power per combined input	450 W (at 50 °C ambient temperature)				
Input	2 x 7-16 female (long neck)				
Connector position	Bottom				
Adjustment mechanism	2x, Position bottom, continuously adjustable				
Weight	26 kg				
Wind load (at 150 km/h)	Frontal / lateral / rearside: 460 / 380 / 860 N				
Height/width/depth	2516 / 262 / 139 mm				
Integrated combiner	The insertion loss is included in the given antenna gain values.				



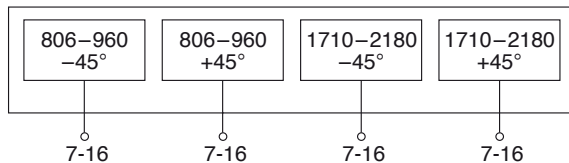
Dual-band Panel Dual Polarization Half-power Beam Width

806–960	1710–2180
X	X
88°	88°

KATHREIN
Antennen · Electronic

XXPol Panel 806–960/1710–2180 88°/88° 13.5/16.5dBi 0°–12°/0°–10°T

Type No.	800 10121					
Frequency range	806–960		1710–2180			
	806 – 866 MHz	824 – 896 MHz	880 – 960 MHz	1710 – 1880 MHz	1850 – 1990 MHz	1920 – 2180 MHz
Polarization	+45°, –45°	+45°, –45°	+45°, –45°	+45°, –45°	+45°, –45°	+45°, –45°
Average gain (dBi)	13.4 ... 13.4 ... 13.1	13.6 ... 13.6 ... 13.4	13.9 ... 13.8 ... 13.5	16.4 ... 16.4 ... 16.2	16.4 ... 16.5 ... 16	16.4 ... 15.9 ... 15.3
Tilt	0° ... 6° ... 12°	0° ... 6° ... 12°	0° ... 6° ... 12°	0° ... 5° ... 10°	0° ... 5° ... 10°	0° ... 5° ... 10°
Horizontal Pattern:						
Half-power beam width	88°	86°	88°	82°	85°	90°
Front-to-back ratio, copolar	> 23 dB	> 23 dB	> 23 dB	> 23 dB	> 23 dB	> 23 dB
Cross polar ratio	Typically:	Typically:	Typically:	Typically:	Typically:	Typically:
Maindirection	0°	0°	0°	0°	0°	0°
Sector	±60°	±60°	±60°	±60°	±60°	±60°
	> 10 dB	> 10 dB	> 13 dB	> 10 dB	> 12 dB	> 10 dB
	avg. 16 dB	avg. 16 dB	avg. 19 dB	avg. 17 dB	avg. 19 dB	avg. 19 dB
Vertical Pattern:						
Half-power beam width	15.0°	14.5°	13.5°	7.0°	6.6°	6.4°
Electrical tilt	0.5°–12.5°, continuously adjustable			0.5°–10°, continuously adjustable		
Min. sidelobe suppression for first sidelobe above main beam: average:	0° ... 6° ... 12° T 16 ... 16 ... 16 dB 17 ... 17 ... 19 dB	0° ... 6° ... 12° T 16 ... 16 ... 16 dB 17 ... 17 ... 19 dB	0° ... 6° ... 12° T 14 ... 14 ... 13 dB 17 ... 16 ... 16 dB	0° ... 5° ... 10° T 17 ... 17 ... 16 dB 20 ... 20 ... 18 dB	0° ... 5° ... 10° T 17 ... 18 ... 16 dB 21 ... 22 ... 17 dB	0° ... 5° ... 10° T 18 ... 16 ... 16 dB 20 ... 20 ... 16 dB
VSWR	< 1.5					
Isolation: Intrasystem	> 30 dB					
Isolation: Intersystem	> 45 dB (806–960 // 1710–2180 MHz)					
Intermodulation IM3	< –150 dBc (2 x 43 dBm carrier)					
Max. power per input	500 W (at 50 °C ambient temperature)			250 W (at 50 °C ambient temperature)		
Total power	1000 W (at 50 °C ambient temperature)			500 W (at 50 °C ambient temperature)		
Input	4 x 7-16 female (long neck)					
Connector position	Bottom					
Adjustment mechanism	2x, Position bottom continuously adjustable					
Weight	21 kg					
Wind load (at 150 km/h)	Frontal / lateral / rearside: 420 / 260 / 620 N					
Height/width/depth	1384 / 262 / 149 mm					



800/900 -
1800/2000
XXPol

Dual-band Panel Dual Polarization Half-power Beam Width

806–960

1710–2180

X

X

88°

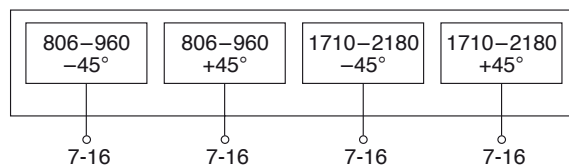
88°

KATHREIN

Antennen · Electronic

XXPol Panel 806–960/1710–2180 88°/88° 15.2/18dBi 0°–10°/0°–6°T

Type No.	800 10122					
Frequency range	806–960		1710–2180			
	806 – 866 MHz	824 – 896 MHz	880 – 960 MHz	1710 – 1880 MHz	1850 – 1990 MHz	1920 – 2180 MHz
Polarization	+45°, –45°	+45°, –45°	+45°, –45°	+45°, –45°	+45°, –45°	+45°, –45°
Average gain (dBi)	14.7 ... 14.9 ... 14.7	15.0 ... 15.2 ... 15.0	15.0 ... 15.2 ... 15.0	17.7 ... 17.8 ... 17.7	17.7 ... 18.0 ... 17.6	17.6 ... 17.8 ... 17.4
Tilt	0° ... 5° ... 10°	0° ... 5° ... 10°	0° ... 5° ... 10°	0° ... 3° ... 6°	0° ... 3° ... 6°	0° ... 3° ... 6°
Horizontal Pattern:						
Half-power beam width	88°	86°	88°	82°	85°	90°
Front-to-back ratio, copolar	> 23 dB	> 23 dB	> 23 dB	> 23 dB	> 23 dB	> 23 dB
Cross polar ratio	Typically:	Typically:	Typically:	Typically:	Typically:	Typically:
Maindirection	0°	0°	0°	0°	0°	0°
Sector	±60°	±60°	±60°	±60°	±60°	±60°
	> 10 dB	> 10 dB	> 13 dB	> 10 dB	> 12 dB	> 10 dB
	avg. 16 dB	avg. 16 dB	avg. 19 dB	avg. 17 dB	avg. 19 dB	avg. 19 dB
Vertical Pattern:						
Half-power beam width	10.5°	10°	9°	5.5°	5.2°	5°
Electrical tilt	0°–10°, continuously adjustable			0°–6°, continuously adjustable		
Min. sidelobe suppression for first sidelobe above main beam	0° ... 5° ... 10° T	0° ... 5° ... 10° T	0° ... 5° ... 10° T	0° ... 3° ... 6° T	0° ... 3° ... 6° T	0° ... 3° ... 6° T
	16 ... 16 ... 14 dB	16 ... 16 ... 16 dB	16 ... 16 ... 14 dB	18 ... 18 ... 16 dB	18 ... 18 ... 16 dB	18 ... 18 ... 16 dB
VSWR	< 1.5					
Isolation: Intrasystem	> 30 dB					
Isolation: Intersystem	> 45 dB (806–960 // 1710–2180 MHz)					
Intermodulation IM3	< –150 dBc (2 x 43 dBm carrier)					
Max. power per input	500 W (at 50 °C ambient temperature)			250 W (at 50 °C ambient temperature)		
Total power	1000 W (at 50 °C ambient temperature)			500 W (at 50 °C ambient temperature)		
Input	4 x 7-16 female (long neck)					
Connector position	Bottom					
Adjustment mechanism	2x, Position bottom, continuously adjustable					
Weight	27 kg					
Wind load (at 150 km/h)	Frontal / lateral / rearside: 580 / 360 / 870 N					
Height/width/depth	1917 / 262 / 149 mm					



Dual-band Panel Dual Polarization Half-power Beam Width

806–960

1710–2180

X

X

88°

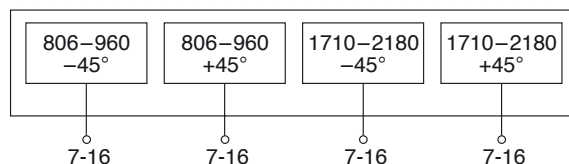
88°

KATHREIN

Antennen · Electronic

XXPol Panel 806–960/1710–2180 88°/88° 16.5/18dBi 0°–7°/0°–6°T

Type No.	800 10123					
Frequency range	806–960		1710–2180			
	806 – 866 MHz	824 – 896 MHz	880 – 960 MHz	1710 – 1880 MHz	1850 – 1990 MHz	1920 – 2180 MHz
Polarization	+45°, –45°	+45°, –45°	+45°, –45°	+45°, –45°	+45°, –45°	+45°, –45°
Average gain (dBi)	16.1 ... 16.2 ... 16.1	16.3 ... 16.4 ... 16.3	16.5 ... 16.6 ... 16.5	17.8 ... 17.7 ... 17.4	18.0 ... 17.9 ... 17.4	17.9 ... 17.8 ... 17.3
Tilt	0° ... 4° ... 7°	0° ... 4° ... 7°	0° ... 4° ... 7°	0° ... 3° ... 6°	0° ... 3° ... 6°	0° ... 3° ... 6°
Horizontal Pattern:						
Half-power beam width	86°	86°	86°	84°	85°	88°
Front-to-back ratio, copolar	> 25 dB	> 25 dB	> 25 dB	> 23 dB	> 23 dB	> 23 dB
Cross polar ratio	Typically: 18 dB	Typically: 18 dB	Typically: 20 dB	Typically: 16 dB	Typically: 16 dB	Typically: 15 dB
Maindirection	0°					
Sector	±60°	> 10 dB	> 13 dB	> 10 dB	> 12 dB	> 10 dB
	±60°	avg. 16 dB	avg. 19 dB	avg. 16 dB	avg. 17 dB	avg. 18 dB
Vertical Pattern:						
Half-power beam width	7.3°	7.2°	6.9°	4.8°	4.5°	4.2°
Electrical tilt	0.5°–7°, continuously adjustable			0°–6°, continuously adjustable		
Min. sidelobe suppression for first sidelobe above main beam	0° ... 4° ... 7° T 15 ... 14 ... 14 dB	0° ... 4° ... 7° T 15 ... 14 ... 14 dB	0° ... 4° ... 7° T 15 ... 14 ... 15 dB	0° ... 3° ... 6° T 18 ... 17 ... 16 dB	0° ... 3° ... 6° T 18 ... 17 ... 17 dB	0° ... 3° ... 6° T 18 ... 16 ... 17 dB
VSWR	< 1.5					
Isolation: Intrasystem	> 30 dB					
Isolation: Intersystem	> 45 dB (806–960 // 1710–2180 MHz)					
Intermodulation IM3	< –150 dBc (2 x 43 dBm carrier)					
Max. power per input	500 W (at 50 °C ambient temperature)			250 W (at 50 °C ambient temperature)		
Total power	1000 W (at 50 °C ambient temperature)			500 W (at 50 °C ambient temperature)		
Input	4 x 7-16 female (long neck)					
Connector position	Bottom					
Adjustment mechanism	2x, Position bottom continuously adjustable					
Weight	33 kg					
Wind load (at 150 km/h)	Frontal / lateral / rearside: 840 / 510 / 1260 N					
Height/width/depth	2635 / 262 / 149 mm					

800/900 -
1800/2000
XXPol

Summary – Directional Antennas

Triple-band

800/900 – 1800/2000

Dual Polarization +45°/-45°

Type	Type No.	Height [mm]	Connector position	Page
XXXPol Panel 806-960	742 270	1498	bottom	104
1710-1880				
1920-2170				
XXXPol Panel 790-960	800 10670	1498	bottom	105
1710-1880 C				
1920-2170				
XXXPol Panel 806-960	800 10290	1540	bottom	106
1710-2180				
1710-2180				
XXXPol Panel 806-960	742 271	2058	bottom	107
1710-1880				
1920-2170				
XXXPol Panel 806-960	800 10671	2058	bottom	108
1710-1880 C				
1920-2170				
XXXPol Panel 806-960	800 10291	2058	bottom	109
1710-2180				
1710-2180				
XXXPol Panel 806-960	742 272	2628	bottom	110
1710-1880				
1920-2170				
XXXPol Panel 790-960	800 10672	2628	bottom	111
1710-1880 C				
1920-2170				
XXXPol Panel 806-960	800 10292	2694	bottom	112
1710-2180				
1710-2180				
XXXPol Panel 806-960	800 10492	2694	bottom	113
1710-2180				
1710-2180				

C = integrated Combiner

New or changed product

When deploying Triple-band Antennas, please also consider using special Triple-band Combiners (see page 229)

Triple-band Panel

Dual Polarization

Half-power Beam Width

806–960 1710–1880 1920–2170

X X X

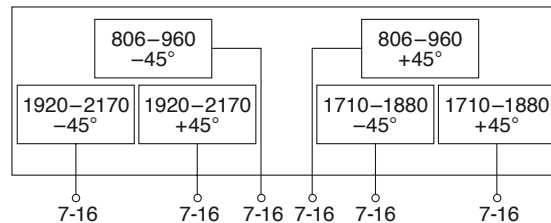
66° 66° 65°

KATHREIN

Antennen · Electronic

XXXPol Panel 806–960/1710–1880/1920–2170 66°/66°/65° 15/16.5/17dBi 0°–12°/0°–8°/0°–8°T

Type No.	742 270				
Frequency range	806–960		1710–1880	1920–2170	
	806–866 MHz	824–894 MHz	880–960 MHz	1710–1880 MHz	1920–2170 MHz
Polarization	+45°, –45°	+45°, –45°	+45°, –45°	+45°, –45°	+45°, –45°
Gain	2 x 14.8 dBi	2 x 15 dBi	2 x 15.2 dBi	2 x 16.5 dBi	2 x 17.2 dBi
Horizontal Pattern:					
Half-power beam width	69°	67°	65°	66°	65°
Front-to-back ratio, copolar	> 27 dB	> 27 dB	> 27 dB	> 25 dB	> 25 dB
Cross polar ratio	Typically: 25 dB	Typically: 25 dB	Typically: 25 dB	Typically: 16 dB	Typically: 18 dB
Main direction	0°				
Sector	±60°	> 10 dB	> 10 dB	> 10 dB	> 10 dB
Vertical Pattern:					
Half-power beam width	14°	13.6°	13°	6.7°	6.2°
Electrical tilt, contin. adjust.	0.5°–12°			0.5°–8°	0°–8°
Sidelobe suppression for first sidelobe above main beam	0° ... 6° ... 12° T 17 ... 17 ... 14 dB	0° ... 6° ... 12° T 17 ... 17 ... 14 dB	0° ... 6° ... 12° T 18 ... 18 ... 15 dB	0° ... 4° ... 8° T 18 ... 16 ... 14 dB	0° ... 4° ... 8° T 18 ... 16 ... 15 dB
VSWR	< 1.5			< 1.5	< 1.5
Isolation: Intrasystem	> 30 dB			> 30 dB	> 30 dB
Isolation: Intersystem	Typically: > 50 dB (806–960 // 1710–1880 MHz) Typically: > 50 dB (806–960 // 1920–2170 MHz) > 30 dB (1710–1880 // 1920–2170 MHz)				
Intermodulation IM3 (2 x 43 dBm carrier)	< –150 dBc			< –150 dBc	< –150 dBc
Max. power per input	250 W			200 W	200 W
	(at 50 °C ambient temperature)				
Input	6 x 7-16 female (long neck)				
Connector position	Bottom				
Adjustment mechanism	3x, Position bottom continuously adjustable				
Weight	22 kg				
Wind load (at 150 km/h)	Frontal / lateral / rearside: 460 / 300 / 690 N				
Height/width/depth	1498 / 262 / 149 mm				



Triple-band Panel

Dual Polarization

Half-power Beam Width

790–960 1710–1880 1920–2170

X X X

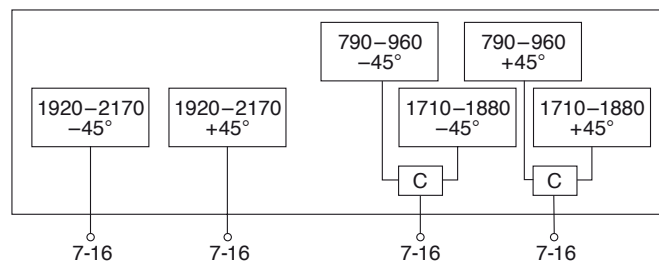
66° 66° 65°

KATHREIN

Antennen · Electronic

XXXPol Panel 790–960/1710–1880/1920–2170 C 66°/66°/65° 15/16.5/17dBi 0°–12°/0°–8°/0°–8°T

Type No.	800 10670				
Frequency range	790–960		1710–1880	1920–2170	
	790–866 MHz	824–894 MHz	880–960 MHz	1710–1880 MHz	1920–2170 MHz
Polarization	+45°, –45°	+45°, –45°	+45°, –45°	+45°, –45°	+45°, –45°
Gain	2 x 14.8 dBi	2 x 15 dBi	2 x 15.2 dBi	2 x 16.5 dBi	2 x 17.2 dBi
Horizontal Pattern:					
Half-power beam width	69°	67°	65°	66°	65°
Front-to-back ratio, copolar	> 27 dB			> 25 dB	> 25 dB
Cross polar ratio	Typically: 25 dB			Typically: 16 dB	Typically: 18 dB
Main direction	0°			0°	0°
Sector	±60°			> 10 dB	> 10 dB
Vertical Pattern:					
Half-power beam width	14°	13.6°	13°	6.7°	6.2°
Electrical tilt, contin. adjust.	0.5°–12°			0.5°–8°	0°–8°
Sidelobe suppression for first sidelobe above main beam	0° ... 6° ... 12° T 17 ... 17 ... 14 dB			0° ... 4° ... 8° T 18 ... 16 ... 14 dB	0° ... 4° ... 8° T 18 ... 16 ... 15 dB
VSWR	< 1.5				
Isolation: Intrasystem	> 30 dB				
Isolation: Intersystem	Typically: > 50 dB (790–960 // 1920–2170 MHz) > 30 dB (1710–1880 // 1920–2170 MHz)				
Intermodulation IM3 (2 x 43 dBm carrier)	< –150 dBc				< –150 dBc
Max. power per input	250 W		200 W	200 W	
	(at 50 °C ambient temperature)				
Max. power per combined input	450 W (at 50 °C ambient temperature)				
Input	4 x 7-16 female (long neck)				
Connector position	Bottom				
Adjustment mechanism	3x, Position bottom continuously adjustable				
Weight	21.5 kg				
Wind load (at 150 km/h)	Frontal / lateral / rearside: 460 / 300 / 680 N				
Height/width/depth	1498 / 262 / 149 mm				
Integrated combiner	The insertion loss is included in the given antenna gain values.				



800/900 -
1800/2000
XXXPol

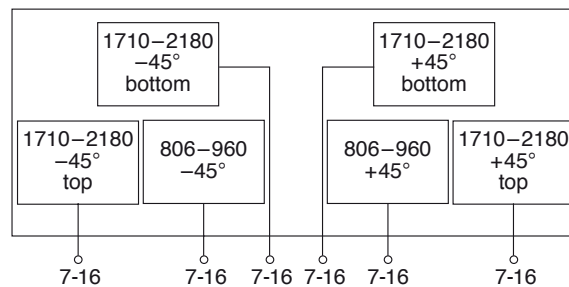
Triple-multiband Panel Dual Polarization Half-power Beam Width

806–960	1710–2180	1710–2180
X	X	X
65°	65°	65°

KATHREIN
Antennen · Electronic

XXXPol Panel 806–960/1710–2180/1710–2180 65°/65°/65° 15/15/15dBi 0°–14°/0°–14°/0°–14°T

Type No.	800 10290					
Frequency range	806 – 866 MHz	806–960 824–894 MHz	880–960 MHz	1710–1880 MHz	1710–2180 1850–1990 MHz	1710–2180 1920–2180 MHz
Polarization	+45°, –45°	+45°, –45°	+45°, –45°	+45°, –45°	+45°, –45°	+45°, –45°
Gain: (dBi)	14.4 ... 14.3 ... 14	14.6 ... 14.4 ... 14.2	14.9 ... 14.7 ... 14.4	14.5 ... 14.5 ... 14.2	14.8 ... 14.8 ... 14.5	15.1 ... 14.8 ... 14.4
1710–2180 MHz (Syst. bottom)				14 ... 14 ... 13.7	14.4 ... 14.3 ... 13.9	14.9 ... 14.8 ... 14.2
1710–2180 MHz (Syst. top)				0° ... 7° ... 14°	0° ... 7° ... 14°	0° ... 7° ... 14°
Tilt	0° ... 7° ... 14°	0° ... 7° ... 14°	0° ... 7° ... 14°			
Horizontal Pattern:						
Half-power beam width	69°	68°	67°	67°	63°	60°
Front-to-back ratio (180°±30°)	> 25 dB			> 25 dB		
Cross polar ratio	Typically: 25 dB			Typically: 20 dB		
Maindirection	0°			0°		
Sector	±60°			> 10 dB		
Vertical Pattern:						
Half-power beam width	14.7°	14.3°	13.9°	13.8°	13.2°	12.6°
Electrical tilt	0°–14°, continuously adjustable			Syst. bottom: 0°–14°, continuously adjustable Syst. top: 0°–14°, continuously adjustable		
Sidelobe suppression	0° ... 7° ... 14°	0° ... 7° ... 14°	0° ... 7° ... 14°	0° ... 7° ... 14°	0° ... 7° ... 14°	0° ... 7° ... 14°
– for first sidelobe above main beam	18 ... 16 ... 16 dB	18 ... 16 ... 16 dB	18 ... 17 ... 16 dB	18 ... 16 ... 15 dB	18 ... 17 ... 17 dB	18 ... 16 ... 17 dB
VSWR	< 1.5					
Isolation: Intrasystem	> 30 dB					
Isolation: Intersystem	> 35 dB (806–960 // 1710–2180 MHz) > 30 dB (1710–2180 // 1710–2180 MHz)					
Intermodulation IM3	< –150 dBc (2 x 43 dBm carrier)					
Max. power per input	400 W (at 50 °C ambient temperature)			250 W (at 50 °C ambient temperature)		
Input	6 x 7-16 female (long neck)					
Connector position	Bottom					
Adjustment mechanism	3x, Position bottom continuously adjustable					
Weight	21 kg					
Wind load (at 150 km/h)	Frontal / lateral / rearside: 480 / 300 / 700 N					
Height/width/depth	1540 / 262 / 149 mm					



Triple-band Panel

Dual Polarization

Half-power Beam Width

806–960 1710–1880 1920–2170

X X X

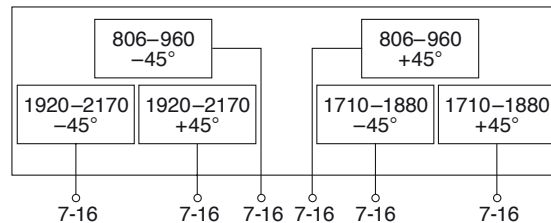
67° 65° 65°

KATHREIN

Antennen · Electronic

XXXPol Panel 806–960/1710–1880/1920–2170 67°/65°/65° 16.5/17.5/18dBi 0°–10°/0°–6°/0°–6°T

Type No.	742 271				
Frequency range	806–866 MHz	806–960 824–894 MHz	880–960 MHz	1710–1880 MHz	1920–2170 MHz
Polarization	+45°, –45°	+45°, –45°	+45°, –45°	+45°, –45°	+45°, –45°
Gain	2 x 16 dBi	2 x 16.1 dBi	2 x 16.3 dB	2 x 17.5 dBi	2 x 18 dBi
Horizontal Pattern:					
Half-power beam width	69°	68°	67°	65°	65°
Front-to-back ratio, copolar	> 25 dB	> 25 dB	> 25 dB	> 24 dB	> 25 dB
Cross polar ratio	Typically: 25 dB	Typically: 25 dB	Typically: 25 dB	Typically: 18 dB	Typically: 20 dB
Main direction Sector	> 10 dB	> 10 dB	> 10 dB	> 10 dB	> 10 dB
Vertical Pattern:					
Half-power beam width	9.5°	9.3°	9.0°	4.7°	4.3°
Electrical tilt continuously adjustable	0°–10°			0°–6°	0°–6°
Sidelobe suppression for first sidelobe above main beam	0° ... 5° ... 10° T 15 ... 15 ... 13 dB	0° ... 5° ... 10° T 15 ... 15 ... 13 dB	0° ... 5° ... 10° T 15 ... 15 ... 13 dB	0° ... 3° ... 6° T 18 ... 17 ... 16 dB	0° ... 3° ... 6° T 18 ... 16 ... 15 dB
VSWR	< 1.5				
Isolation: Intrasystem	> 30 dB				
Isolation: Intersystem	Typically: > 50 dB (806–960 // 1710–1880 MHz) Typically: > 50 dB (806–960 // 1920–2170 MHz) > 30 dB (1710–1880 // 1920–2170 MHz)				
Intermodulation IM3	< –150 dBc (2 x 43 dBm carrier)				
Max. power per input	300 W (at 50 °C ambient temperature)		200 W	200 W	
Input	6 x 7-16 female (long neck)				
Connector position	Bottom				
Adjustment	3x, Position bottom continuously adjustable				
Weight	28.5 kg				
Wind load (at 150 km/h)	Frontal / lateral / rearside: 640 / 410 / 950 N				
Height/width/depth	2058 / 262 / 149 mm				



800/900 –
1800/2000
XXXPol

Triple-band Panel

Dual Polarization

Half-power Beam Width

806–960 1710–1880 1920–2170

X X X

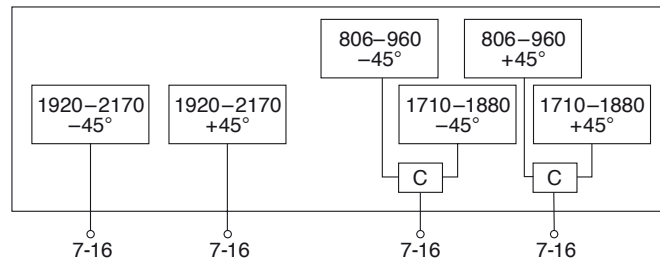
67° 65° 65°

KATHREIN

Antennen · Electronic

XXXPol Panel 806–960/1710–1880/1920–2170 C 67°/65°/65° 16.5/17.5/18dBi 0°–10°/0°–6°/0°–6°T

Type No.	800 10671				
Frequency range	806–960		1710–1880	1920–2170	
	806–866 MHz	824–894 MHz	880–960 MHz	1710–1880 MHz	1920–2170 MHz
Polarization	+45°, –45°	+45°, –45°	+45°, –45°	+45°, –45°	+45°, –45°
Gain	2 x 16 dBi	2 x 16.1 dBi	2 x 16.3 dBi	2 x 17.5 dBi	2 x 18 dBi
Horizontal Pattern:					
Half-power beam width	69°	68°	67°	65°	65°
Front-to-back ratio, copolar	> 25 dB			> 24 dB	> 25 dB
Cross polar ratio	Typically: 25 dB			Typically: 18 dB	Typically: 20 dB
Main direction	0°			0°	0°
Sector	±60°			> 10 dB	> 10 dB
Vertical Pattern:					
Half-power beam width	9.5°	9.3°	9.0°	4.7°	4.3°
Electrical tilt, contin. adjust.	0°–10°			0°–6°	0°–6°
Sidelobe suppression for first sidelobe above main beam	0° ... 5° ... 10° T 15 ... 15 ... 13 dB			0° ... 3° ... 6° T 18 ... 17 ... 16 dB	0° ... 3° ... 6° T 18 ... 16 ... 15 dB
VSWR	< 1.5				
Isolation: Intrasystem	> 30 dB				
Isolation: Intersystem	Typically: > 50 dB (806–960 // 1920–2170 MHz) > 30 dB (1710–1880 // 1920–2170 MHz)				
Intermodulation IM3 (2 x 43 dBm carrier)	< –150 dBc				< –150 dBc
Max. power per input	250 W		200 W	200 W	
	(at 50 °C ambient temperature)				
Max. power per combined input	450 W (at 50 °C ambient temperature)				
Input	4 x 7-16 female (long neck)				
Connector position	Bottom				
Adjustment mechanism	3x, Position bottom continuously adjustable				
Weight	27.5 kg				
Wind load (at 150 km/h)	Frontal / lateral / rearside: 640 / 410 / 950 N				
Height/width/depth	2058 / 262 / 149 mm				
Integrated combiner	The insertion loss is included in the given antenna gain values.				



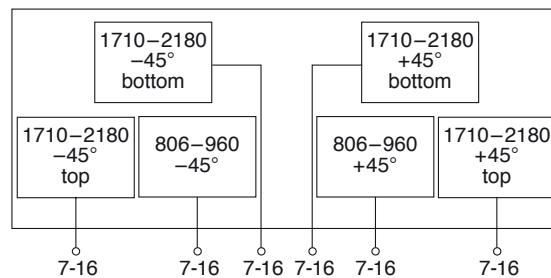
Triple-multiband Panel Dual Polarization Half-power Beam Width

806–960	1710–2180	1710–2180
X	X	X
65°	65°	65°

KATHREIN
Antennen · Electronic

XXXPol Panel 806–960/1710–2180/1710–2180 65°/65°/65° 16.5/16.5/16.5dBi 2°–14°/0°–14°/0°–14°T

Type No.	800 10291					
Frequency range	806 – 866 MHz	806–960 824–894 MHz	880–960 MHz	1710–1880 MHz	1710–2180 1850–1990 MHz	1710–2180 1920–2180 MHz
Polarization	+45°, –45°	+45°, –45°	+45°, –45°	+45°, –45°	+45°, –45°	+45°, –45°
Average Gain: (dBi)	16.2 ... 16 ... 15.7	16.3 ... 16.1 ... 15.8	16.4 ... 16.2 ... 15.8	15.9 ... 15.9 ... 15.5	16.2 ... 16.2 ... 15.7	16.3 ... 16.3 ... 15.8
1710–2180 MHz (Syst. bottom)				15.8 ... 15.8 ... 15.4	16.1 ... 16.1 ... 15.4	16.3 ... 16.2 ... 15.5
1710–2180 MHz (Syst. top)				0° ... 7° ... 14°	0° ... 7° ... 14°	0° ... 7° ... 14°
Tilt	2° ... 8° ... 14°	2° ... 8° ... 14°	2° ... 8° ... 14°			
Horizontal Pattern:						
Half-power beam width	68°	67°	65°	65°	64°	60°
Front-to-back ratio (180°±30°)	> 25 dB	> 25 dB	> 25 dB	> 25 dB	> 25 dB	> 25 dB
Cross polar ratio	Typically: 25 dB	Typically: 25 dB	Typically: 25 dB	Typically: 18 dB	Typically: 19 dB	Typically: 20 dB
Maindirection Sector	0° ±60°					
Vertical Pattern:						
Half-power beam width	10°	9.7°	9.3°	9.5°	9°	8.7°
Electrical tilt	2°–14°, continuously adjustable			0°–14°, continuously adjustable		
Sidelobe suppression – for first sidelobe above main beam	2° ... 8° ... 14° T 17 ... 17 ... 15 dB	2° ... 8° ... 14° T 17 ... 17 ... 16 dB	2° ... 8° ... 14° T 17 ... 17 ... 16 dB	0° ... 7° ... 14° T 18 ... 17 ... 17 dB	0° ... 7° ... 14° T 18 ... 17 ... 17 dB	0° ... 7° ... 14° T 18 ... 17 ... 17 dB
VSWR	< 1.5	< 1.5	< 1.5	< 1.5	< 1.5	< 1.5
Isolation: Intrasystem	> 30 dB					
Isolation: Intersystem	> 35 dB (806–960 // 1710–2180 MHz) > 30 dB (1710–2180 // 1710–2180 MHz)					
Intermodulation IM3	< –153 dBc (2 x 43 dBm carrier)					
Max. power per input	400 W (at 50 °C ambient temperature)			250 W (at 50 °C ambient temperature)		
Input	6 x 7-16 female (long neck)					
Connector position	Bottom					
Adjustment mechanism	3x, Position bottom/continuously adjustable					
Weight	27 kg					
Wind load (at 150 km/h)	Frontal / rateral / rearside: 640 / 410 / 950 N					
Height/width/depth	2058 / 262 / 149 mm					



800/900 –
1800/2000
XXXPol

Triple-band Panel

806–960

1710–1880

1920–2170

KATHREIN

Dual Polarization

X

X

X

Antennen · Electronic

Half-power Beam Width

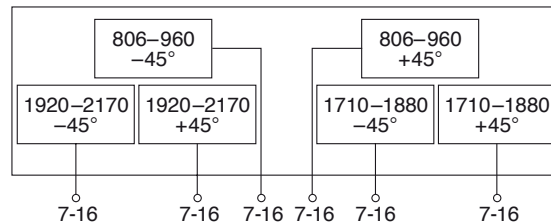
66°

65°

63°

XXXPol Panel 806–960/1710–1880/1920–2170 66°/65°/63° 17.5/17.5/18dBi 0°–7°/0°–6°/0°–6°T

Type No.	742 272				
Frequency range	806–960		1710–1880	1920–2170	
	806–866 MHz	824–894 MHz	880–960 MHz	1710–1880 MHz	1920–2170 MHz
Polarization	+45°, –45°	+45°, –45°	+45°, –45°	+45°, –45°	+45°, –45°
Gain	2 x 17 dBi	2 x 17.2 dBi	2 x 17.5 dBi	2 x 17.5 dBi	2 x 18 dBi
Horizontal Pattern:					
Half-power beam width	69°	68°	66°	65°	63°
Front-to-back ratio, copolar	> 25 dB	> 25 dB	> 25 dB	> 25 dB	> 25 dB
Cross polar ratio	Typically: 25 dB	Typically: 25 dB	Typically: 25 dB	Typically: 14 dB	Typically: 17 dB
Main direction	0°				
Sector	±60°	> 10 dB	> 10 dB	> 10 dB	> 10 dB
Vertical Pattern:					
Half-power beam width	7.4°	7.2°	6.8°	4.7°	4.4°
Electrical tilt, contin. adjust.	0.5°–7°			0°–6°	0°–6°
Sidelobe suppression for first sidelobe above main beam	0° ... 4° ... 7° T 15 ... 16 ... 16 dB	0° ... 4° ... 7° T 15 ... 16 ... 16 dB	0° ... 4° ... 7° T 16 ... 17 ... 16 dB	0° ... 3° ... 6° T 17 ... 17 ... 16 dB	0° ... 3° ... 6° T 17 ... 15 ... 14 dB
VSWR	< 1.5			< 1.5	< 1.5
Isolation: Intrasystem	> 30 dB			> 30 dB	> 30 dB
Isolation: Intersystem	Typically: > 50 dB (806–960 // 1710–1880 MHz) Typically: > 50 dB (806–960 // 1920–2170 MHz) > 30 dB (1710–1880 // 1920–2170 MHz)				
Intermodulation IM3 (2 x 43 dBm carrier)	< –150 dBc			< –150 dBc	< –150 dBc
Max. power per input	250 W			200 W	200 W
	(at 50 °C ambient temperature)				
Input	6 x 7-16 female (long neck)				
Connector position	Bottom				
Adjustment mechanism	3x, Position bottom continuously adjustable				
Weight	34 kg				
Wind load (at 150 km/h)	Frontal / lateral / rearside: 860 / 520 / 1270 N				
Height/width/depth	2628 / 262 / 149 mm				



Triple-band Panel

Dual Polarization

Half-power Beam Width

790–960 1710–1880 1920–2170

X X X

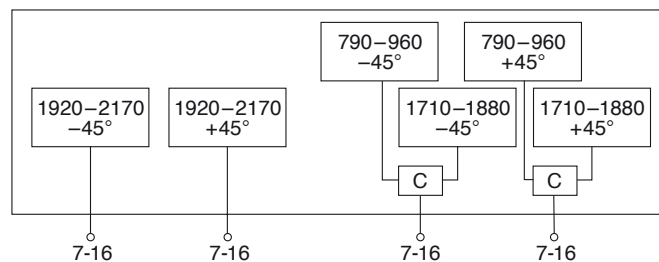
66° 65° 63°

KATHREIN

Antennen · Electronic

XXXPol Panel 790–960/1710–1880/1920–2170 C 66°/65°/63° 17.5/17.5/18dBi 0°–7°/0°–6°/0°–6°T

Type No.	800 10672				
Frequency range	790–960		1710–1880	1920–2170	
	790–866 MHz	824–894 MHz	880–960 MHz	1710–1880 MHz	1920–2170 MHz
Polarization	+45°, –45°	+45°, –45°	+45°, –45°	+45°, –45°	+45°, –45°
Gain	2 x 17 dBi	2 x 17.2 dBi	2 x 17.5 dBi	2 x 17.5 dBi	2 x 18 dBi
Horizontal Pattern:					
Half-power beam width	69°	68°	66°	65°	63°
Front-to-back ratio, copolar	> 25 dB			> 25 dB	> 25 dB
Cross polar ratio	Typically: 25 dB			Typically: 14 dB	Typically: 17 dB
Main direction	0°			0°	0°
Sector	±60°			> 10 dB	> 10 dB
Vertical Pattern:					
Half-power beam width	7.4°	7.2°	6.8°	4.7°	4.4°
Electrical tilt, contin. adjust.	0.5°–7°			0°–6°	0°–6°
Sidelobe suppression for first sidelobe above main beam	0° ... 4° ... 7° T 15 ... 16 ... 16 dB			0° ... 3° ... 6° T 17 ... 17 ... 16 dB	0° ... 3° ... 6° T 17 ... 15 ... 14 dB
VSWR	< 1.5				
Isolation: Intrasystem	> 30 dB				
Isolation: Intersystem	Typically: > 50 dB (790–960 // 1920–2170 MHz) > 30 dB (1710–1880 // 1920–2170 MHz)				
Intermodulation IM3 (2 x 43 dBm carrier)	< –150 dBc				< –150 dBc
Max. power per input	250 W		200 W	200 W	
	(at 50 °C ambient temperature)				
Max. power per combined input	450 W (at 50 °C ambient temperature)				
Input	4 x 7-16 female (long neck)				
Connector position	Bottom				
Adjustment mechanism	3x, Position bottom continuously adjustable				
Weight	32 kg				
Wind load (at 150 km/h)	Frontal / lateral / rearside: 850 / 510 / 1270 N				
Height/width/depth	2628 / 262 / 149 mm				
Integrated combiner	The insertion loss is included in the given antenna gain values.				



800/900 -
1800/2000
XXXPol

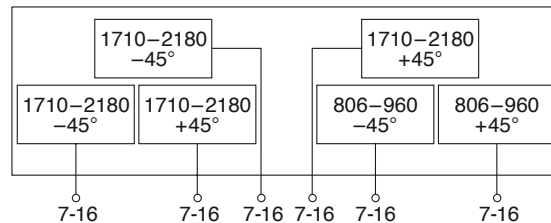
Triple-multiband Panel Dual Polarization Half-power Beam Width

806–960	1710–2180	1710–2180
X	X	X
65°	65°	65°

KATHREIN
Antennen · Electronic

XXXPol Panel 806–960/1710–2180/1710–2180 65°/65°/65° 17.5/17.5/17dBi 2°–10°/0°–10°/0°–10°T

Type No.	800 10292					
Frequency range	806–960		1710–2180 1710–2180			
	806–866 MHz	824–894 MHz	880–960 MHz	1710–1880 MHz	1850–1990 MHz	1920–2180 MHz
Polarization	+45°, –45°	+45°, –45°	+45°, –45°	+45°, –45°	+45°, –45°	+45°, –45°
Average Gain: (dBi)	16.8...17.0...16.8	17.0...17.1...17.0	17.4...17.4...17.1	16.5...16.7...16.5	17.0...17.1...16.7	17.3...17.4...16.8
1710–2180 MHz (Syst. bottom)				16.2...16.3...16.1	16.7...16.7...16.4	17.0...17.0...16.5
1710–2180 MHz (Syst. top)				0°...5°...10°	0°...5°...10°	0°...5°...10°
Tilt	2°...6°...10°	2°...6°...10°	2°...6°...10°			
Horizontal Pattern:						
Half-power beam width	69°	68°	66°	65°	64°	60°
Front-to-back ratio, copolar	> 30 dB	> 30 dB	> 30 dB	> 26 dB	> 26 dB	> 26 dB
Cross polar ratio	Typically:	Typically:	Typically:	Typically:	Typically:	Typically:
Maindirection 0°	25 dB	25 dB	25 dB	18 dB	18 dB	18 dB
Sector ±60°	> 10 dB	> 10 dB	> 10 dB	> 10 dB	> 10 dB	> 10 dB
±60°	avg. 20 dB	avg. 20 dB	avg. 17 dB	avg. 14 dB	avg. 16 dB	avg. 16 dB
Vertical Pattern:						
Half-power beam width	7.8°	7.6°	7.1°	7.4°	7.2°	6.8°
Electrical tilt	2.5°–9.5°, continuously adjustable			0°–10°, continuously adjustable		
Sidelobe suppression for first sidelobe above main beam	2° ... 6° ... 10° T 17 ... 16 ... 14 dB	2° ... 6° ... 10° T 17 ... 16 ... 14 dB	2° ... 6° ... 10° T 17 ... 16 ... 14 dB	0° ... 5° ... 10° T 16 ... 16 ... 16 dB	0° ... 5° ... 10° T 16 ... 17 ... 16 dB	0° ... 5° ... 10° T 16 ... 16 ... 14 dB
VSWR	< 1.5	< 1.5	< 1.5	< 1.5	< 1.5	< 1.5
Isolation: Intrasystem	> 30 dB	> 30 dB	> 30 dB	> 30 dB	> 30 dB	> 30 dB
Isolation: Intersystem	> 36 dB (806–960 // 1710–2180 MHz) > 36 dB (1710–2180 // 1710–2180 MHz)					
Intermodulation IM3	< –150 dBc (2 x 43 dBm carrier)			< –150 dBc (2 x 43 dBm carrier)		
Max. power per input	250 W (at 50 °C ambient temperature)			200 W (at 50 °C ambient temperature)		
Input	6 x 7-16 female					
Connector position	Bottom					
Adjustment mechanism	3x, Position bottom continuously adjustable					
Weight	36 kg					
Wind load (at 150 km/h)	Frontal / lateral / rearside: 870 / 520 / 1320 N					
Height/width/depth	2694 / 262 / 149 mm					



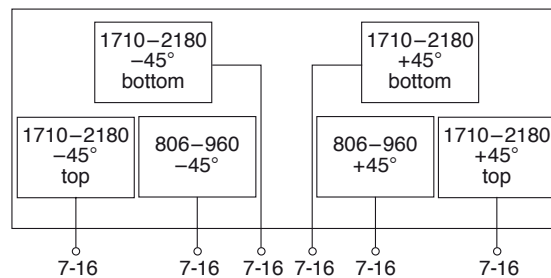
Triple-multiband Panel Dual Polarization Half-power Beam Width

806–960	1710–2180	1710–2180
X	X	X
65°	65°	65°

KATHREIN
Antennen · Electronic

XXXPol Panel 806–960/1710–2180/1710–2180 65°/65°/65° 17.5/17/17dBi 4°–12°/0°–14°/0°–14°T

Type No.	800 10492					
Frequency range	806 – 866 MHz	806–960 824–894 MHz	880–960 MHz	1710–1880 MHz	1710–2180 1850–1990 MHz	1710–2180 1920–2180 MHz
Polarization	+45°, –45°	+45°, –45°	+45°, –45°	+45°, –45°	+45°, –45°	+45°, –45°
Average Gain: (dBi)	16.8 ... 16.7 ... 16.6	17.0 ... 16.9 ... 16.8	17.2 ... 17.0 ... 16.8	16.1 ... 16.3 ... 16.0	16.7 ... 16.8 ... 16.3	17.0 ... 17.0 ... 16.6
1710–2180 MHz (Syst. bottom)				16.1 ... 16.1 ... 15.8	16.7 ... 16.5 ... 16.2	17.0 ... 16.9 ... 16.4
1710–2180 MHz (Syst. top)				0° ... 7° ... 14°	0° ... 7° ... 14°	0° ... 7° ... 14°
Tilt	4° ... 8° ... 12°	4° ... 8° ... 12°	4° ... 8° ... 12°			
Horizontal Pattern:						
Half-power beam width	68°	67°	66°	65°	63°	60°
Front-to-back ratio (180°±30°)	> 25 dB	> 25 dB	> 25 dB	> 25 dB	> 25 dB	> 25 dB
Cross polar ratio	Typically:	Typically:	Typically:	Typically:	Typically:	Typically:
Maindirection	23 dB	24 dB	25 dB	18 dB	18 dB	19 dB
Sector	> 10 dB	> 10 dB	> 10 dB	> 10 dB	> 10 dB	> 10 dB
Vertical Pattern:						
Half-power beam width	7.5°	7.4°	7.2°	7.8°	7.6°	7.2°
Electrical tilt	4°–12°, continuously adjustable			0°–14°, continuously adjustable		
Sidelobe suppression	4° ... 8° ... 12° T	4° ... 8° ... 12° T	4° ... 8° ... 12° T	0° ... 7° ... 14° T	0° ... 7° ... 14° T	0° ... 7° ... 14° T
– for first sidelobe above main beam	19 ... 17 ... 16 dB	19 ... 18 ... 18 dB	19 ... 18 ... 18 dB	18 ... 17 ... 15 dB	18 ... 17 ... 15 dB	18 ... 17 ... 15 dB
– within 0°–20° sector above horizon	15 ... 15 ... 14 dB	16 ... 15 ... 14 dB	16 ... 15 ... 14 dB	18 ... 17 ... 15 dB	17 ... 17 ... 15 dB	15 ... 14 ... 14 dB
VSWR	< 1.5					
Isolation: Intrasystem	> 30 dB					
Isolation: Intersystem	> 36 dB (806–960 // 1710–2180 MHz) > 36 dB (1710–2180 // 1710–2180 MHz)					
Intermodulation IM3	< –153 dBc (2 x 43 dBm carrier)					
Max. power per input	400 W (at 50 °C ambient temperature)			250 W (at 50 °C ambient temperature)		
Input	6 x 7-16 female (long neck)					
Connector position	Bottom					
Adjustment mechanism	3x, Position bottom continuously adjustable					
Weight	34 kg					
Wind load (at 150 km/h)	Frontal / lateral / rearside: 870 / 520 / 1320 N					
Height/width/depth	2694 / 262 / 149 mm					



800/900 –
1800/2000
XXXPol

